



## Product Description

This monoclonal antibody was raised to human topo I (recombinant protein, overexpressed and purified) using standard methods. The antibody (IgG class) works very well for Western blotting experiments and immunoprecipitation. The epitope has not been mapped.

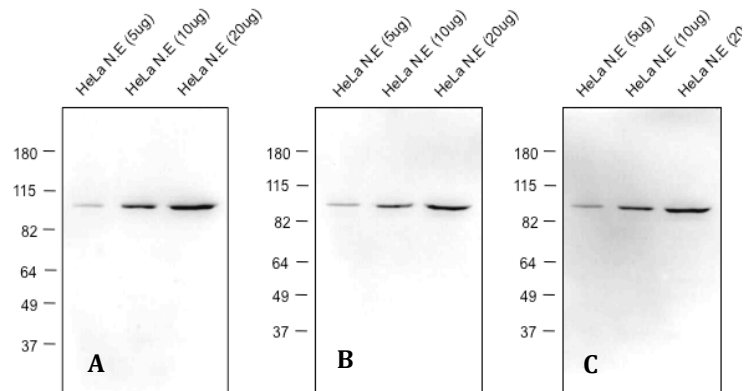
## Vial Contents

TG2012-4 contains 250 units of monoclonal antibody from a concentrated hybridoma supernatant. Unit definition is based on Western blotting units: one unit corresponds to a 1:1000 dilution of antibody solution sufficient to diluted working probe. The vial contains 250ul of antibody at 1 unit/ul. For example, to prepare 10 ml of diluted antibody probe, at 10ul of the stock antibody solution to 10ml of suitable diluent (TBS for example). This will be sufficient to detect human topoisomerase I in 10ug of a crude nuclear extract of typical cells (HeLa). Note that the unit concentration is very conservative and in many situations, higher dilutions of the product may work well (see Fig. 1). If the extracts are prepared from nuclei, proteolysis is less problematic. Procedures for making nuclear extracts are described on our website [http://www.topogen.com/admin/upload\\_pdf/How-to-Extract-Topoisomerase-from-Cells.pdf](http://www.topogen.com/admin/upload_pdf/How-to-Extract-Topoisomerase-from-Cells.pdf). Note that in most cases a standard whole cell extract will also work if used fresh extracts are prepared. A method for making fresh nuclear extracts is described here: [http://www.topogen.com/admin/upload\\_pdf/Methods-for-Extracting-Topoisomerases-for-Western-Blots.pdf](http://www.topogen.com/admin/upload_pdf/Methods-for-Extracting-Topoisomerases-for-Western-Blots.pdf)

Typically you will detect a single prominent band of 100 kDa with fresh extracts. Since topo I can degrade, we recommend using nuclear extracts or freshly prepared whole cell extracts.

## Figure 1. Western Results.

A fresh nuclear extract was prepared using 0.5M NaCl to dissociate DNA bound proteins from isolated nuclei. The total amount of protein was measured and the indicated amount of protein analyzed by Western blotting with different dilutions of the antibody (A, 1:1000; B, 1:2000; C, 1:5000).



## Storage and Shipping Conditions

The antibody is stored at -20°C and is shipped on blue ice.

### Product Application and Disclaimer

This product is not licensed or approved for administration to humans or animals. It may be used with experimental animals only. The product is for in vitro research diagnostic studies only. The product is non-infectious and non-hazardous to human health. This information is based on present knowledge and does not constitute a guarantee for any specific product features and shall not establish a legally valid contractual relationship. TopoGEN, Inc. shall not be held liable for product failure due to mishandling and incorrect storage by end user. TopoGEN's liability is limited to credit or product replacement.